

**Minutes:** Boggabri Coal Community Consultative Committee  
Held via video conference

**Thursday 9 September 2021**

**Members Present:** Cr Robert Kneale (RK) – Narrabri Shire Council, Danielle Nieuwenhuis (DN) – Boggabri Coal, Geoff Eather (GE) – Community Representative, Hamish Russell (HR) – Boggabri Coal, Mitchum Neave (MN) – Aboriginal Community Representative (via phone), Roselyn Druce (RD) – Boggabri Coal CCC, Stewart Dunlop (SD) – Boggabri Coal, Alex Williams (AW) – Boggabri Coal

**Apologies:** Pat Murphy (PM) – Community Representative, Richard Gillham (RG) – Community Representative

**Independent Chair:** David Ross (DR)

**Independent Secretary:**

Debbie Corlet (DC)

<b>Agenda Items</b>	<b>Who to Present</b>
1. Welcome, Introductions and Apologies	DR
2. Declaration of Pecuniary or other interests	DR
3. Confirmation of the Minutes of the previous meeting – Thursday 13 May 2021	DR
4. Business arising from the previous minutes – Action List Distributed	DR
5. Company Reports and Overview of Activities	SD, HR, DN, RB
6. General Business including Modification 8	ALL
7. Next Meeting – <b>Thursday 28 October 2021</b>	

<b>Agenda Item</b>	<b>Discussion</b>	<b>Action/By Whom</b>
<b>1.</b>	<b>Welcome, Introductions and Apologies</b> – DR welcomed everyone.	
<b>2.</b>	<b>Declaration of pecuniary or other interests</b> – DR shared that he is paid a fee to chair these meetings as is DC for typing the minutes. RG has a property that falls into the ‘Zone of Affectation’ for acquisition, and he also leases country from Boggabri and WHC.	
<b>3.</b>	<b>Confirmation of the minutes of the previous meeting (13 May 2021)</b> – The CCC endorsed the minutes as an acceptable record of what was discussed with RD requesting an amendment was included; namely “we are going to offload some of our water allocations with the licences, decommissioned, not pumping from the river”. This was agreed to by HR and DR.	

4.	<p><b>Business Arising from the previous minutes</b></p> <p>Responses to actions were presented in slides covered in coming sections.</p>	
5.	<p><b>Company Reports and Overview of Activities by Boggabri Coal</b></p> <p>HR observed that there was a specific action to include a slide of what properties are in the Approval – offsets / hectares / biodiversity etc. He provided this in a map and gave a summation of BCOPL offset properties. Slide 6 highlights the property names, total hectares, offset hectares or agricultural etc. Right side is the sum total of our property holdings.</p> <p>RD – I believe Boggabri and WHC own properties together? Which ones are they or are they not on this map?  HR – There’s only 4 jointly owned properties and 2 of them are on the map. Rocklea property is jointly owned property and then move to the east, you’ll see the Bellview property. There are 2 other properties that don’t appear on this slide, and one is to the south of Tarrawonga Coal Mine which is the Tarrawonga property. Just below the northern property is the aggregation of a few properties that stretches a bit wider on both sides of the northern property and it’s jointly owned. The last 2 are pure agricultural and we don’t control them, WHC controls those on our behalf.</p> <p>HR provided a slide with an illustration of the Travelling Stock Routes in response to request from MN. The question that prompted this information, was along the lines of do they go through our offset properties. Well, they don’t but they do sit in between some of our offset properties and some of our land holdings. They are mainly on major highways and adjoining privately owned properties in the vicinity of our operation.</p> <p><b>Management of Tyres</b></p> <p>In response to an action, HR provided information in relation to tyre disposal and a link to the current Project Approval where it refers to tyre disposal. On Page XV of that, reference is made to the following (paraphrased):</p> <ul style="list-style-type: none"> <li>• Waste Boggabri Coal has an existing Waste Management System which was developed ...</li> <li>• Boggabri Coal has documented procedures for the minimisation, storage, transport, disposal, tracking and reporting of waste generated onsite ...</li> <li>• The current Waste Management System will continue to be utilised for the Project ...</li> </ul> <p>HR – That is the link to our Project Approval but it’s actually in the Environmental Assessment that refers to In-pit Tyre Disposal. This was approved by DPIE.</p> <p>RD – Has your EPL been amended so that you can bury tyres?  HR – We have received a proposed wording of a condition that contemplates in-pit disposal of end of life / oversized tyres. We are considering that wording and about to respond to the EPA. We haven’t got an approved variation to our EPL that has a condition that considers in-pit disposal of oversized / end of life tyres.</p>	<p>Action 1 – BCM to add all properties, including those that are shared, to slide</p>

RD – Despite that, on the next slide, it says that you’ve actually buried 64 end of life tyres? So that means, you’ve buried them, and you still didn’t have an amended EPL which to me would be a breach?

HR – That could be interpreted that way. We did have the verbal concurrence of the EPA to continue with this practice.

RD – I would suggest it is a breach.

HR - Slide 9 gives a historical perspective, saying BCOP expects to bury up to 200 end of life HV tyres per annum. This is the number that EPA has proposed to include in our EPL.

MN – Is that for the rest of the life for the life of the mine or will there be modifications over time?

HR – There is a slide in this pack that talks more about our progress towards alternate technologies and methodologies. So, I won’t talk about the length of time yet. Second question about increasing or decreasing the number of tyres – that is not our intention. The 200 is a limit that we can’t go above in accordance with the EPL.

RD – How many tyres were buried from 2006 to 2018 and if they were buried onsite and if not, what did you do with OTR tyres up until 2018?

HR – While we have buried tyres in the pit, I’ll take on notice as I don’t have those numbers with me, but I do have access to them. We do maintain a lot of data in terms of this sort of information.

RD – Did all those have GPS and / or do you know exactly where they are under the over-burden in-pit?

HR – Of the top of my head, yes, we have all that data.

RK described the destructive distillation process for recycling tyres. They can now take tyres up to around the 5 tonnes per unit and they put them into a vacuum chamber and then apply an extremely high temperature and the end result is that you get 3 products that can then be repurposed which is oil, carbon and steel. There is a plant currently operating on a small scale in Warren in Central West NSW. Are you aware of this?

HR – We are aware that there are a few operators of alternate technologies in the northwest, and we are looking at all of those.

MN – Just wanted to remind the mine that he had suggested that each of the 3 mines work together to set up their own facility and to involve indigenous locals to get involved. The people in Warren and people in VIC are looking for opportunities to partner with bodies like the mines.

HR – I’ll talk to MN offline about proposals like his that should make their way to our business can be discussed outside the CCC. We are definitely looking at different technologies and ways. There is a slide on this further on as well.

Action 2 – BCM to provide number of tyres buried between 2006 and 2018 and locations

Action 3 – HR to discuss recycling proposals with MN outside of meeting

SD discussed recycling further, observing that the mine recycles approx. 75% of waste. Main recyclables include oil, effluent, scrap steel, timber, paper and cardboard and batteries. 557,700L of oil was recycled in 2020. So far in 2021 we have recycled 359,440L.

SD - There are currently no tyre recycling facilities in NSW capable of handling tyres of our size. There is 1 that has commenced in central QLD. We do not have a practical option at the moment. IAR (Idemitsu Australia Resources) and Boggabri Coal have recently put an Expression of Interest to the market to try and identify a suitable partner to carry out this service. We have commenced clarification of options and feasibility studies with the 3 who have shown interest. At this stage it is unlikely that any option would be operational within 2-3 years. One of the things they need is a base load and from this region perspective, having WHC tyres included in the project is going to be critical to make it happen and we'll be discussing that with WHC on the way. The reality is from a volume perspective, somewhere in the Hunter Valley is a more sensible location for a plant because of the scale and that means transport for us of tyres going offsite.

#### **MOD 8 – Groundwater Interception**

HR presented a slide in relation to an action from the last meeting about how many megalitres would be intercepted with the Mod8 modification? Table 8.1 in the Mod is self-explanatory as it breaks up all the different water sources. It talks about the year of maximum water take and how much is predicted in that maximum year and how much entitlement, and the next column illustrates how much entitlement is currently possessed for that water type.

#### **TREE TROFF Update**

A map was presented by HR of the offset properties and the locations of the tree troffs. Photos were also shown of the variety of species using these tree troffs.

MN – Zones 4, 5 and 11 alluviums, I don't understand what that actually means. Can we have a map?

HR – Yes, I think a long time ago maybe during the drought, I did show a figure about the breakdown of the zones. I can show that again. The alluvium is Zone 4, and the hard rock is in the forest. I'll present the breakup of the different water sources and the zones.

#### **Correspondence – NSW Department of Planning, Industry & Environment**

Correspondence with State and Federal bodies was tabled. This included: BTM 3 yearly groundwater model review consultation – in final stages at the moment; MOD8 public exhibition. There's been some interaction with Planning about this; Social Impact Management Plan (SIMP) submitted to DPIE for approval; DPIE received a complaint concerning potential clearing within the vegetated buffer corridor between the Boggabri Coal Operations and the Maules Creek Coal Mine and BCOPL responded to that.

Action 4 – BCM to present the breakup of the different water sources and zones with a map

**Correspondence – National Parks Wildlife Services & Biodiversity Conservation Trust** – exchange of information re long term security of biodiversity offset properties.

RD – Re offsets. Is there going to be another extension there? Or just ironing out a few details?

HR – In relation to the progress of the securitisation of these offsets in the long term with either Parks or the Conservation Trust, we are making progress. We’ve got a fair bit of time left to be able to do this, but it is a very onerous process.

SD – We’ve got over 20 conservation agreements that we have to put in place with BCT. We don’t want to have an in-depth negotiation for every one of those. So, we are trying to develop a template for the first 2 which we are basing on 2 properties at the moment which are Springfield and Eastview just outside the town. The intention is that once we have that template contract developed for those 2 properties, it will then be a copy and paste for the balance of the agreements. All the work is going into getting the contract framework agreed that we can use across all the properties. Once that has been agreed with the BCT, the rollout of the subsequent ones should be a lot quicker.

MN – With regards the dot point about the Social Impact Management Plan, the mine and its consultants engage with any indigenous groups within the Red Chief boundary at all?

HR – We consulted at our Aboriginal Stakeholder Consultation Forum which is made up of our registered Aboriginal parties and participants. Outside of that, I’m not sure if we’ve gone and consulted with any indigenous groups.

MN – Annoyed with this as the RAPs aren’t relevant to this conversation as they don’t generally live in the area.

MN – The comment about the National Parks Wildlife Service & Biodiversity Conservation Trust –why can’t you give some of that land back to indigenous organisations and why haven’t you engaged with some of those bodies?

HR – We have a Condition in our Project Approval that the requirements secure the long-term ecological protection of these properties. The first hurdle for us before we go and divest these properties is to get those agreements over those properties. Maybe considerations sometime in the future about divesting those to indigenous groups but that’s a medium-term consideration.

MN observed that, with Joe Rennick formerly of Boggabri Coal, there were discussions held around the suggestion of giving some land back to relevant indigenous organisations.

**Correspondence – EPA**

There was an ‘Official Caution’ received relating to the burial of HV tyres between 2014 – 2020. In July, a blast complaint. This was for 2 unique blast complaints. ‘Formal Warning’ received relating to blasting practices for a blast that occurred on 19 July. BCOP responded on 2 September.

RD – The blast was the one I reported. Where was all your monitoring taking place. I know you sent me details of the blast. Where was the monitoring taking place as it wasn’t at my place, was it? There was no monitoring close to my house, was there? Where is your western monitoring area?

HR – We have a data sharing agreement with our industry neighbours.

Action 5 – BCM to confirm if they engaged with local indigenous organisations

RD – So it was at our front gate monitoring?

HR – We did receive information in relation to the data that was received, or the over pressure vibration received by that monitor in your driveway, yes.

RD – That sign we talked about last time in the forest. It's such a distance in on that road and if that's the sign that is supposed to warn people that there could be blasting, shouldn't it be right out on the road where the other one is for WHC.

HR – Forestry determines the appropriate location for that. I'll have a look at it based on your concerns.

**Correspondence – Community Member via RD**

HR – There was a question from RD related to some monitoring that we are doing in the Leards State Forest and about analogue sites - are they fixed and if we need to move them, do we have to get a modification to our approval? A general answer to that question is that there are 4 analogue monitoring sites in fixed locations. They are part of a monitoring program that's commenced prior to 2006 - before our Approval and before Maules Creek was even considered. As a result, some of those locations have had to move because they were in the footprint of either the Maules Creek mine or they had been intercepted by mine progression. Yes, fixed but sometimes they have to be moved because of reasons outside of our control. The GPS locations are provided at the bottom of Slide 20.

**Operations Update**

SD observed that 2021 is 15<sup>th</sup> year of operations. Strong operational performance, despite high rainfall and impact of COVID restrictions. Currently forecasting to mine 8.2m tonne of coal with sales of 7.2m tonne, which would be a mine record. Averaging around 3 or 4 train loads of coal per day.

SD also provided an update on the detailed covid protocols and monitoring that the mine has in place.

MN – Curious as to how many workers might be coming from out of areas of concern like Muswellbrook.

SD – We're tracking people from specific areas, so general group for Regional NSW – so that applies to the majority of the State and specific areas of concern like areas of Sydney for example. We don't believe we have anyone coming from there at the moment. We do have people who travel up and down from the Hunter Valley, but they are subject to the same controls that we are here.

DR – There's risks around but people are still working but there are strict protocols in place to ensure that with those risks are being proactively managed.

SD – If they are coming to site, they have to declare where they are coming from. They have to declare where they have been. There are strict requirements around 7-day testing from people from the hot spots, particularly in the Sydney area

Action 6 – HR to look into feasibility of sign being moved

but people from general Regional NSW, we're tracking it but the conditions for someone coming up from the Hunter Valley are no different in reality from someone coming from Gunnedah or Narrabri.

#### **Housing VPA update – General Housing**

Reviewing options for construction of housing in 2022 in Boggabri. Architect has provided a range of initial design options for review. We will be discussing these options with Council over the next few weeks. The construction is in Boggabri not Narrabri. Costs are being included in 2022 Capital Budget.

MN – In regard to reviewing options for construction of housing, when in 2022 might things commence?

SD – We still haven't finalised the designs, so don't have formal planning permission but once that design has been finalised and subject to planning permission, we'll be looking to put tenders into the market for construction. I would suggest the first half of the year. How long the construction take, will depend on the final design and what we go for.

**2022 4 x Electrical apprenticeships** – in partnership with Golding and ourselves. This advertisement is out in the community. Please let the community know about it.

#### **Monitoring Summary**

Air Quality, Noise and Groundwater monitoring has been undertaken in accordance with Project Approval and EPL requirements. No exceedances of Project Approval or EPL limits have occurred in the reporting period.

**Site Water Storage** – 1.4 gigalitres or 1,400 megalitres stored on site in our storages.

#### **Bore Extraction Since Previous Meeting**

BCO has extracted 82 ML from its borefield since 13 May 2021. So less reliant on importing from our bores.

**Community Complaints** – Almost 2 years without any but then two complaints in July and they were both for blasting. One on 19 July and the other 26 July.

#### **MOD8 – What's Next**

On public exhibition until midnight tonight.

RD – Requirement or need for the extra height of about 5 metres?

HR – Our designs at the moment are a bread top design and the limit is 395 RL. We are looking at having a less uniformed top of the dump and bringing in some variability in the height, so we can reflect more of a natural landform. That extra 5 metres gives us the ability to put some undulations on the top of the dump.

RD – What we are hoping is that it has a dome top on it, not a dip.

	<p>HR – There’s no final void. The dome top would still have to have a mechanism to handle concentrated flow. On your dome top, you’d still have to have blue lines somewhere to handle the flow of concentrated water.</p> <p>RD – If the MOD8 does go ahead and is approved. What is the forecast ROM tonnage of coal mine be? HR – There’s no planned change to the intensity of mining.</p> <p>RD – I think last time you told us, it could be 5 years before you started mining, if this approval went through. SD – It could be 5 years or 5 months to be quite honest before starting, as the final mine design is not yet complete.</p> <p><b>Biodiversity Offset Areas</b> CCC Biodiversity Offsets Property site visit to be held in November pending COVID. The Autumn pest program was a combination of 1080 fox baiting and night shooting. The baiting program was very successful with 55.7% of the baits taken were by foxes (296 in total). During the night shooting 39 pigs, 4 cats, 3 foxes and 1 hare were removed. Pig trapping has occurred during August with over 50 pigs removed. Tree planting has been completed in Merriendi and Braefield and is continuing in Nioka North. Approx. 40,000 of 86,000 tubestock have been planted.</p> <p>RD – In the relation to the Tree TOFFs, can you put a number on the table as well (slide 14) so we can get an idea of where those birds and animals are. Are there a lot of cats? HR – There was only 1 cat.</p>	<p>Action 7 – BCM to add number of species to slide 14</p>
<p><b>6.</b></p>	<p><b>General Business</b></p> <p>MN – We’ve talked a lot about the disposal of tyres but what about things like air filters / oil filters and brake pads – how does that get disposed of?</p> <p>HR – Air filters / oil filters. We put those oil filters into a separate bin, and they get taken down to a buy-out waste management company in Rutherford and they drain the oil, and they recycle the elements of those filters or what they can. Brake pads – I’m not sure.</p> <p>MN – We used to have a graph on dust and air quality? HR – We decided to bring all the monitoring slides into a few statements because it was so repetitive and there was not much interest put to that data. Sure, if that’s what the CCC would like.</p> <p>DR then led a discussion on future meetings, their effectiveness and what information could be delivered before or during meetings. Members were keen to receive information, in the form of the presentation, a week in advance. That would help members to be prepared with questions. DR observed how, with other CCCs that he chaired, this approach</p>	<p>Action 8 – BCM to advise what happens to the brake pads</p> <p>Action 9 – BCM to include slides on dust and air quality as an appendix</p>



	<p>made meetings more efficient but also allowed more time was used for group discussions rather than have solely one person at a time asking questions of the company.</p> <p>MN asked if he could receive a hard copy of both the presentation and final draft minutes from the previous meeting a week in advance in order to prepare.</p> <p>SD – From a mine perspective, we should be able to commit to responding to all the actions within 28 days and getting those out to all participants and I think we should be able to commit to getting the pack out 2 weeks prior to the meeting. I think if the actions are closed out and communicated 28 days after the previous meeting, unless there is a particular issue arisen from those actions, we shouldn't need to spend another hour going through them.</p>	
<b>7.</b>	<p><b>Next meeting date</b> - Next meeting <b>Thursday 28 October 2021 at 9:30 am</b>. Location to be confirmed closer to the date.</p> <p>DR gained agreement from members that, should there be a chance to arrange the next meeting to be held in person, the next meeting could be postponed by two weeks.</p>	

Meeting Closed at 11:21 pm

**Appendix 1: Actions**

Page No	Action No	Description	Date Raised
2	1	BCM to add all properties, including those that are shared, to slide	9 Sept 2021
3	2	BCM to provide number of tyres buried between 2006 and 2018 and locations	9 Sept 2021
3	3	HR to discuss recycling proposals with MN outside of meeting	9 Sept 2021
4	4	BCM to present the breakup of the different water sources and zones with a map	9 Sept 2021
5	5	BCM to confirm if they engaged with local indigenous organisations	9 Sept 2021
6	6	HR to look into feasibility of sign being moved	9 Sept 2021
8	7	BCM to add number of species to slide 14	9 Sept 2021
8	8	BCM to advise what happens to the brake pads	9 Sept 2021
8	9	BCM to include slides on dust and air quality as an appendix	9 Sept 2021



# CCC Meeting September 2021

9th September 2021















# Agenda

September 2021



- Confirmation of record keeping
- Apologies
- Declaration of pecuniary or other interests
- Confirmation of minutes
- Business arising from previous minutes
- Correspondence
- Company reports and overview
- General business
- Next meeting

## Business Arising from Previous Minutes

Action	Action to be done	Status	Comments
1	Add penalties to archaeological site warning signs		Sign erected
2	Check to see if any property was missed from February CCC presentation		Detail in pack
3	Include slides on what properties are in the approval (offsets, hectares, biodiversity etc).		Detail in pack
4	TSR graph/slide on scale and scope of biodiversity offset properties		Detail in pack
5	DR & HR to monitor the information that does become available on the gas proposal for any potential changes.		Ongoing monitoring
6	HR to provide link to Project Approval re tyre disposal		Detail in pack
7	HR to provide numbers on tyres and how much oil is recycled/what is recycled		Detail in pack
8	BCO to report back each meeting re tyre recycling		Detail in pack
9	BCO to report exact numbers of megalitres to be intercepted with MOD8 modification		Detail in pack
10	BCO to report back what colour rock drains will be		No final design at this stage
11	Newsletter and exhibition details to be sent to David who will provide to CCC members		Completed
12	HR to present analysis data from the Tree Troff		Detail in pack



## Action 2

# List of all offset properties and monitoring bores- '*Properties Missed*'

Braefield, Sunshine, Nioka North

Mallee, Myall Plains, Wirrilah, Goonbri

Jerralong, Bellvue, Northam

Springfield, Eastview

Therandra, Merriendi

The Rock, Rocklea, Heathcliff

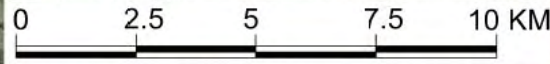
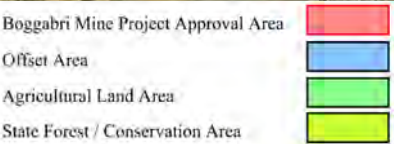
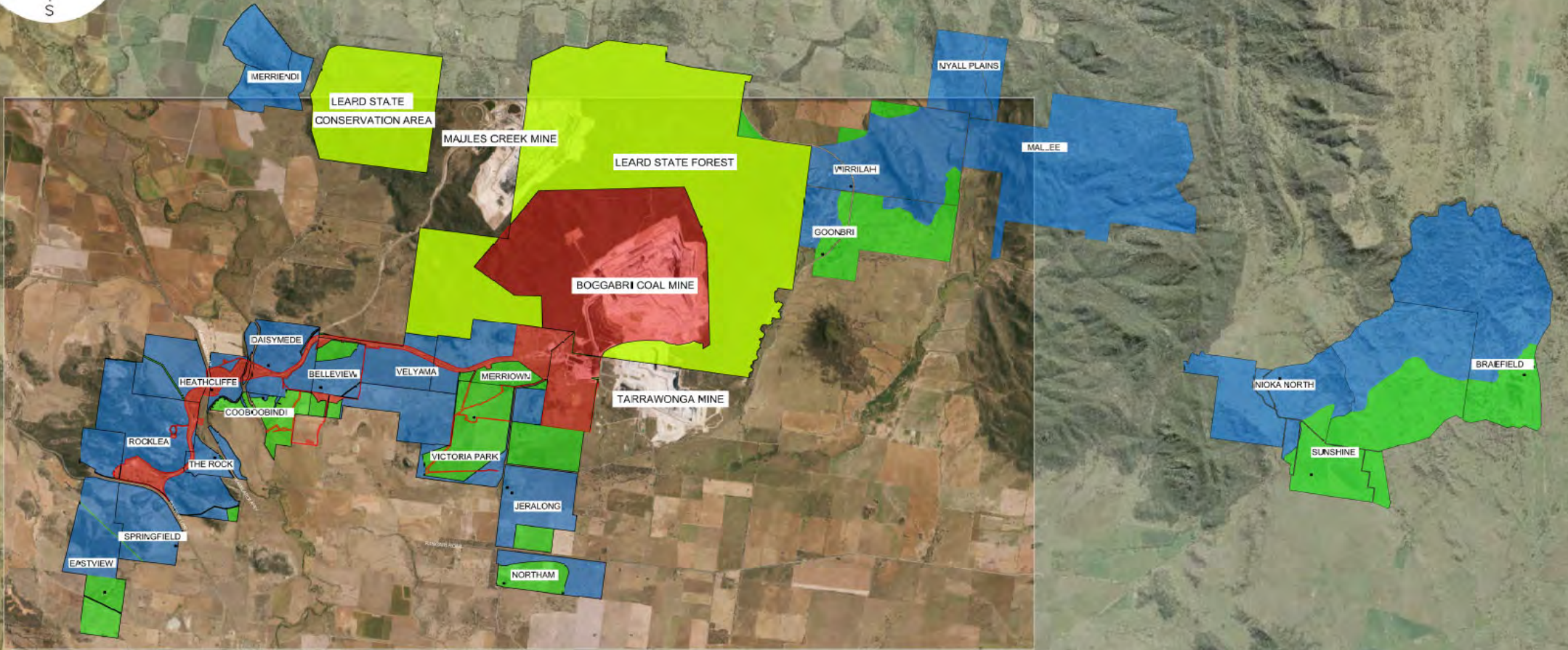
Victoria Park, Merriown, Nagero, Cooboobindi

Velyama, Daisymeade



### Action 3

## Offset Properties





### Action 3

## Offset hectares

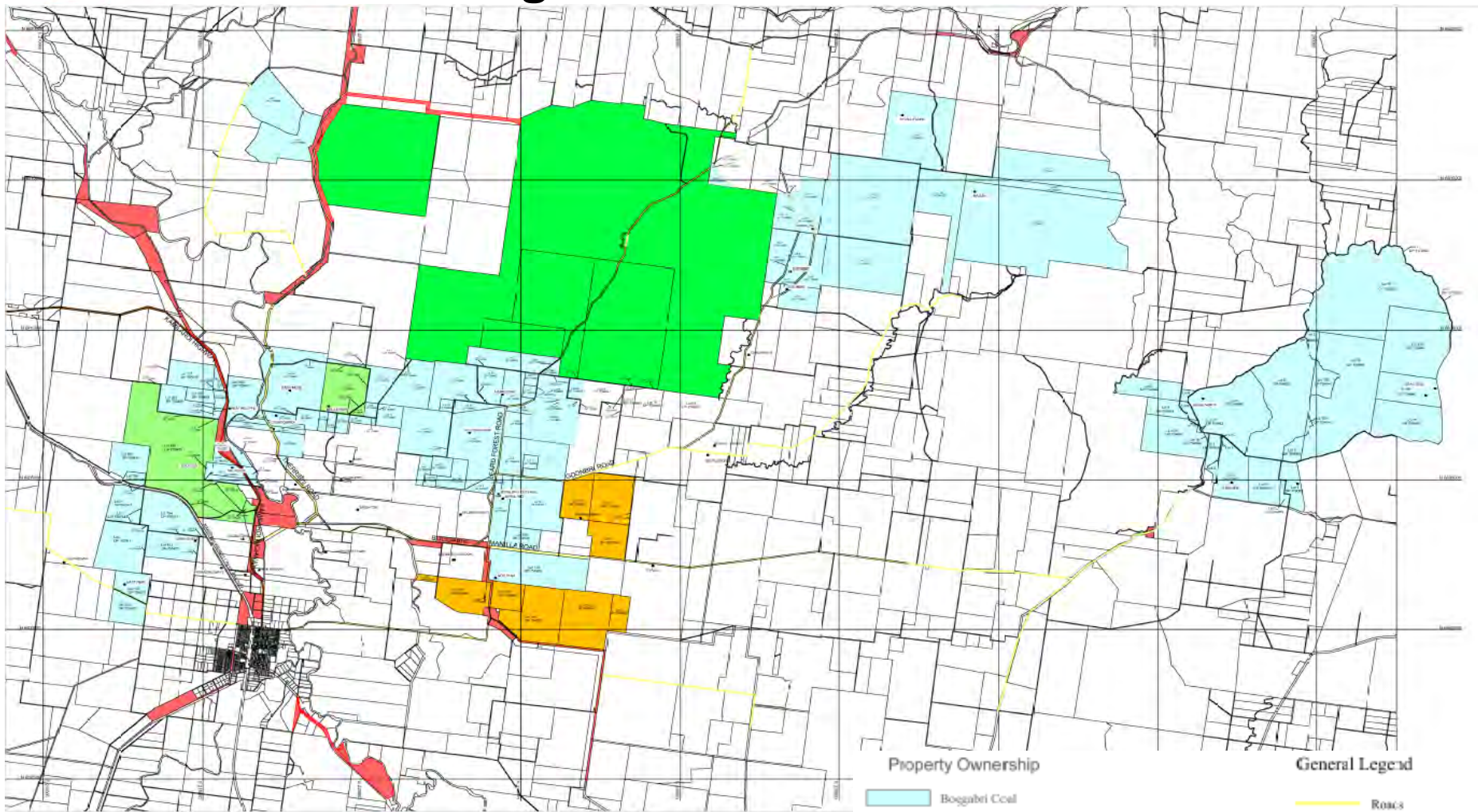
Property	Total Hectares	Offset Hectares	Ag / Other Use Hectares
Braefield	1,758	1,400	358
North Nioka	909	859	50
Sunshine	1,806	736	1,070
Mallee	2,066	2,066	0
Myall Plains	473	473	0
Wirrilah	1,026	884	142
Goonbri	833	231	602
Northam	333	172	161
Jeralong	732.3	398	334.3
Victoria Park	560.2	100.5	459.7
Nagero	328.4	0.9	327.5
Merriown	679.6	361.6	318

Property	Total Hectares	Offset Hectares	Ag / Other Use Hectares
Velyama	327.3	285.5	41.8
Bellevue	628.9	498.5	130.4
Daisymede	398.7	344.7	54
Coboobinidi	228	15.4	212.6
Merriendi	482	482	0
Heathcliffe	465	378	87
Rocklea	1,042	889	153
The Rock	136.5	128	8.5
Springfield	345.7	343	2.7
Eastview	550	357	193
<b>TOTAL (ha)</b>	<b>16,108.6</b>	<b>11,403.1</b>	<b>4,705.5</b>



## Action 4

# Travelling Stock Routes around BCM



### Property Ownership

- Light blue: Bogabri Coal
- Orange: Bogabri Coal & Whitehaven Coal Mining
- Green: Bogabri Coal & Males Creek JV
- Bright green: Leard State Forest
- Red: TSI

### General Legend

- Yellow line: Roads
- Brown line: Kamilloni Highway
- Black square: Residence / Property zone





## Action 6

# Provide a Link to Project Approval re tyre disposal

Page XV [Microsoft Word - 101202 Boggabri Coal Mine EA MASTER.docx \(nsw.gov.au\)](#)

- Waste Boggabri Coal has an existing Waste Management System which was developed.....
- Boggabri Coal has documented procedures for the minimisation, storage, transport, disposal, tracking and reporting of waste generated onsite.....
- The current Waste Management System will continue to be utilised for the Project.....





## Action 7

# End of Life HV Tyre's

- End of life HV tyre disposal numbers;

2018	2019	2020	2021 (to date)
134	144	162	174

- BCOP expects to bury up to 200 end of life HV tyres per annum
- In June 2021, BCO buried 64 end of life HV tyres in pit.





## Action 7

# Site Recycling

- Boggabri Coal recycles approx. 75% of waste.
- Main recyclables include oil, effluent, scrap steel, timber, paper & cardboard and batteries.
- 557,700L of oil was recycled in 2020. So far in 2021 have recycled 359,440L.





## Action 8

# Tyre Recycling

- There are currently no tyre recycling facilities in NSW capable of handling tyres of our size
- IAR and Boggabri Coal have recently put an “Expression of Interest” to the market to try and identify a suitable partner to carry out this service
  - 6 companies have been approached
  - 3 have shown an initial interest , the other 3 are not in a position to consider at the moment
- We have commenced clarification of options with the 3 who have shown interest
- At this stage it is unlikely that any option would be operational within 2- 3 years



## Action 9

# MOD8 Groundwater Interception

Table 8.1 Maximum predicted takes for MOD 8 vs existing entitlements

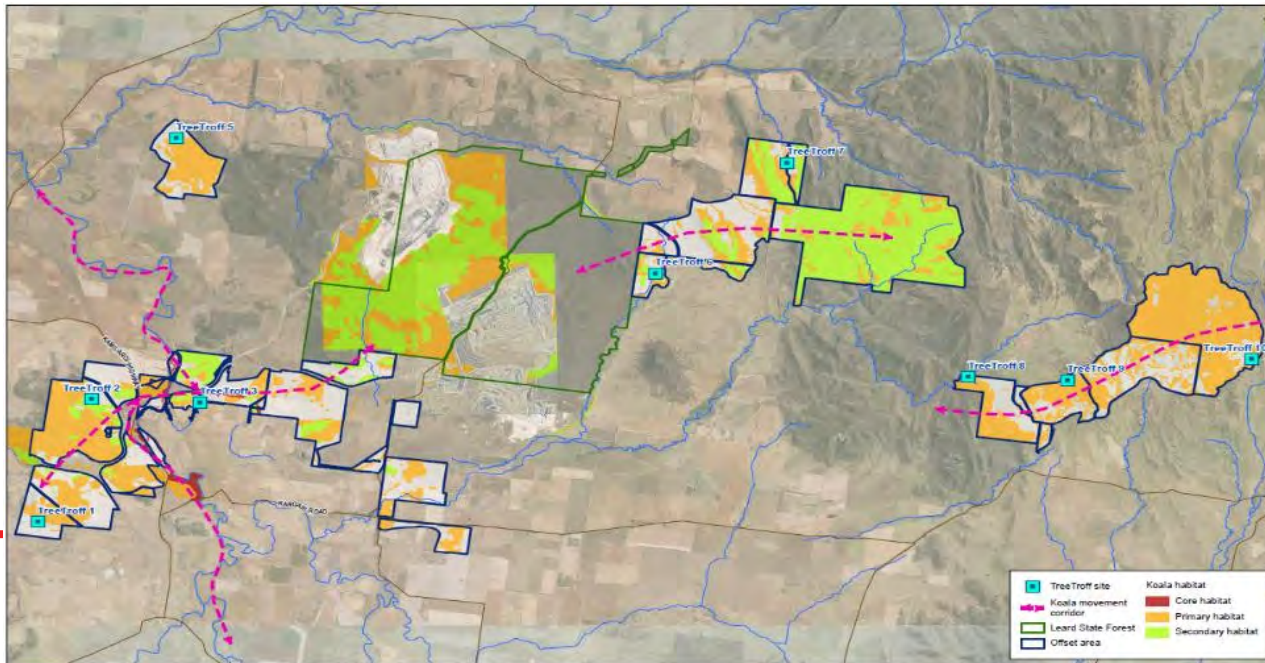
Water sharing plan	Water Source	Year of maximum take	Maximum predicted annual take (ML)	Existing annual entitlement (ML)
NSW Murray Darling Basin Porous Rock Groundwater Sources	Gunnedah-Oxley Basin porous rock	2027	608	842
Upper and Lower Namoi Groundwater Sources	Zone 4 alluvium	2036	109	1,028
Upper and Lower Namoi Groundwater Sources	Zone 11 alluvium	2036	13	20
Upper and Lower Namoi Groundwater Sources	Zone 5 alluvium	n/a	0	0



## Action 12

# TREE TROFF® Update

- Frequented by birds, possums and goannas.
- Monitoring program currently in place servicing all 10 TREE TROFF®



# TREE TROFF® Update: Species identified (see appendix for photos)

Grey-crowned Babbler (Vulnerable) (3 and 6)	Brushtail Possum's (1, 2, 3, 8 and 9)	Rat (2, 7, 9 and 10)
Southern Boobook (5, 6 and 8)	Spotted bowerbird (2, 5, 9 and 10)	Grey butcherbird (1)
Spiny-cheeked Honeyeater (1, 2, 7 and 9)	Cat (2)	Eastern Rosella's (2, 6, 8 and 9)
Blue-faced Honeyeater (3, 5 and 6)	Australian King-parrot (1, 8 and 9)	Lace monitor (1, 2, 7 and 8)
Squirrel Glider (2 and 10)	Noisy miner (4, 5, 6 and 9)	Sulphur-crested Cockatoo (5)
Grey fantail (1 and 2)	Apostlebird (8)	Feral Goat (8)

Numbers in brackets correspond to species location on Tree Troff® map.



Sugar Glider

Swift C 031F -00C 13/04/2021 00:43:19



Southern Boobook

Swift 064F 17C 29/12/2020 18:03:27



Spotted bowerbird

Swift 064F 17C 09/07/2015 07:58:55



Grey-crowned Babbler (Vulnerable)

Swift 074F 23C 15/04/2021 04:32:10



 idemitsu  
**Correspondence**





## Correspondence

### NSW Department of Planning, Industry & Environment

- BTM 3 yearly groundwater model review consultation
- MOD8 Public Exhibition
- Social Impact Management Plan (SIMP) submitted to DPIE for approval
- Received Annual Review acceptance letter on the 13<sup>th</sup> August
- Requested a copy of Waste Management Plan
- Complaint concerning potential clearing within the vegetated buffer corridor between the Boggabri Coal Operations and the Maules Creek Coal Mine.

### National Parks Wildlife Service & Biodiversity Conservation Trust

- Exchange of information re: long term security of biodiversity offset properties





## Correspondence

### Environment Protection Authority (EPA)

- Monthly noise reports
- Consultation re: EPL variation application
- 'Official Caution' received relating to the burial of HV tyres between 2014 – 2020
- July blast complaints
- 'Formal Warning' received relating to blasting practises for a blast that occurred on the 19<sup>th</sup> July. BCOP responded on 2<sup>nd</sup> September
- MOD8 Consultation



## Correspondence

### Department of Agriculture, Water & Environment

- Federal Approval Audit Report finalised. No further action to be taken
- MOD8 consultation

### Forestry Corporation of NSW

- Continuing negotiations about access/compensation agreements

## Correspondence

### Community Member Via Roselyn Druce

*According to the Leard Forest Regional Biodiversity Strategy (LEARD FOREST REGIONAL BIODIVERSITY STRATEGY STAGE 2 – STRATEGY REPORT 3338\_R02\_Biodiversity Strategy\_FINAL), “Strategic Focus Area 5 – Enhance the connectivity of habitats through corridor and buffer area establishment and management”, the success of mine rehabilitation is measured against analogue sites in the Leard State Forest.*

- How many and where are the analogue sites? (GIS coordinates or a precise map please)*
- Are these locations fixed? Do the analogue sites remain consistent throughout the life of the mine?*
- If no to the above, what applications or approvals are required to change the analogue sites and what is the justification?*

**BCO:** There are 4 analogue sites that are in fixed locations. They are part of a monitoring program has been in existence since before 2006, prior BCM’s major project approval and well before approval of the MCCM. As a result, some locations have had to move due to mine approval and mine progression.

Analogue site	Easting	Northing
LSF1	229032	6613117
LSF2	230555	6614275
LSF3	225853	6609636
LSF4	230212	6609306

 idemitsu  
Company Reports and Overview





## Operations Update

- 2021 is our 15<sup>th</sup> year of operations
- Strong operational performance, despite high rainfall and impact of COVID restrictions
- Currently forecasting to mine 8.2m tonne of coal with sales of 7.2m tonne, which would be a mine record





## COVID UPDATE

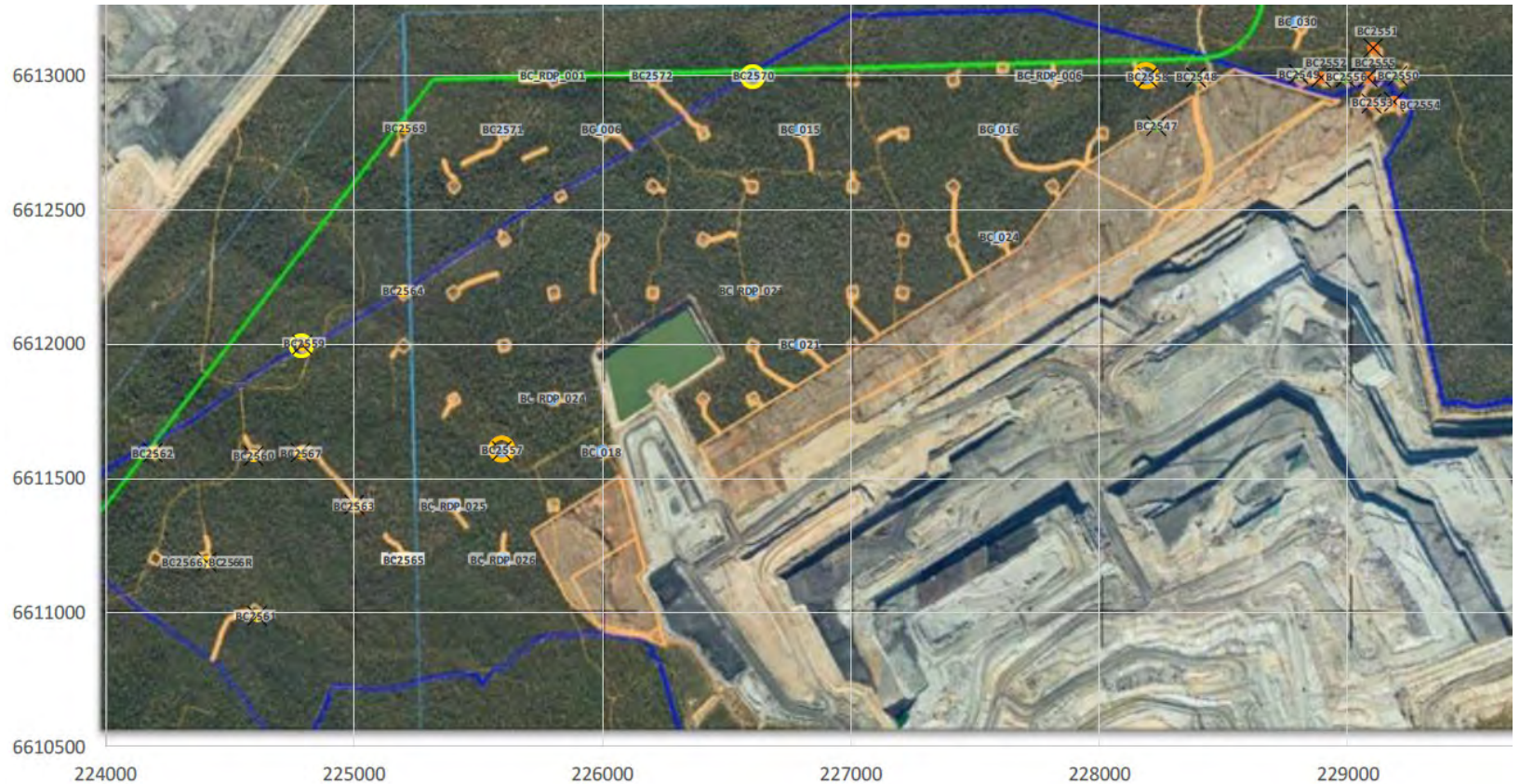
- Ongoing monitoring and compliance with NSW Public Health Orders and NSW Health Guidelines
- Strict protocols on site include:
  - Temperature checking
  - Face masks
  - Social distancing in facilities and vehicles
  - Personal hygiene stations
  - Split shift starts
  - Segregation of different work groups
  - Additional professional cleaning
- Restrictions on visitors to site





# Exploration Update

- 28 of 40 exploration holes have been drilled to date in 2021
- Balance due to be completed by end of year
- All activity has been within approved Project Boundary





## Housing VPA update

### General housing

- Reviewing options for construction of housing in 2022 in Boggabri
- Architect has provided a range of initial design options for review
- Discussions to be held with council in coming weeks
- Costs are being included in 2022 Capital Budget



# 2022 4x Electrical apprenticeships



## 2022 Electrical Apprenticeships Boggabri Coal Operations



Skillset in conjunction with Boggabri Coal Operations/Golding Contracting are currently seeking applications for passionate individuals to commence their Electrical Apprenticeship in late January 2022.

### Why this apprenticeship is right for YOU?

Learn the foundations and content to develop skills and knowledge required in the Electrical trade and Coal Mining Industry, while completing a Certificate III Electrotechnology Electrician over 48-month period. This entry-level opportunity is suited to applicants who are highly-motivated, have a passion for hands on learning and are wanting to pursue a career in the Coal Mining industry.

### Benefits of this role:

Rotating Roster

Career development & specialised skills training

Nationally recognised qualification

### How to apply

- Enter the QR code to view the full job advertisement and apply through the Skillset website.
- Or go to: <https://skillset.com.au/employment-career-development/job-vacancies/details/?id=1292>
- Upload your updated cover letter and resume.



[skillset.com.au](https://skillset.com.au)



1300 853 525





## Management Plan's currently subject of review/revision

- Social Impact Management Plan (Submitted for approval August 2021)
- Traffic Management Plan
- Groundwater Management Plan
- Water Management Plan
- Surface Water Management Plan
- Noise Management Plan
- Air Quality Management Plan
- Blast Management Plan
- Mine Operations Plan



## Monitoring Summary

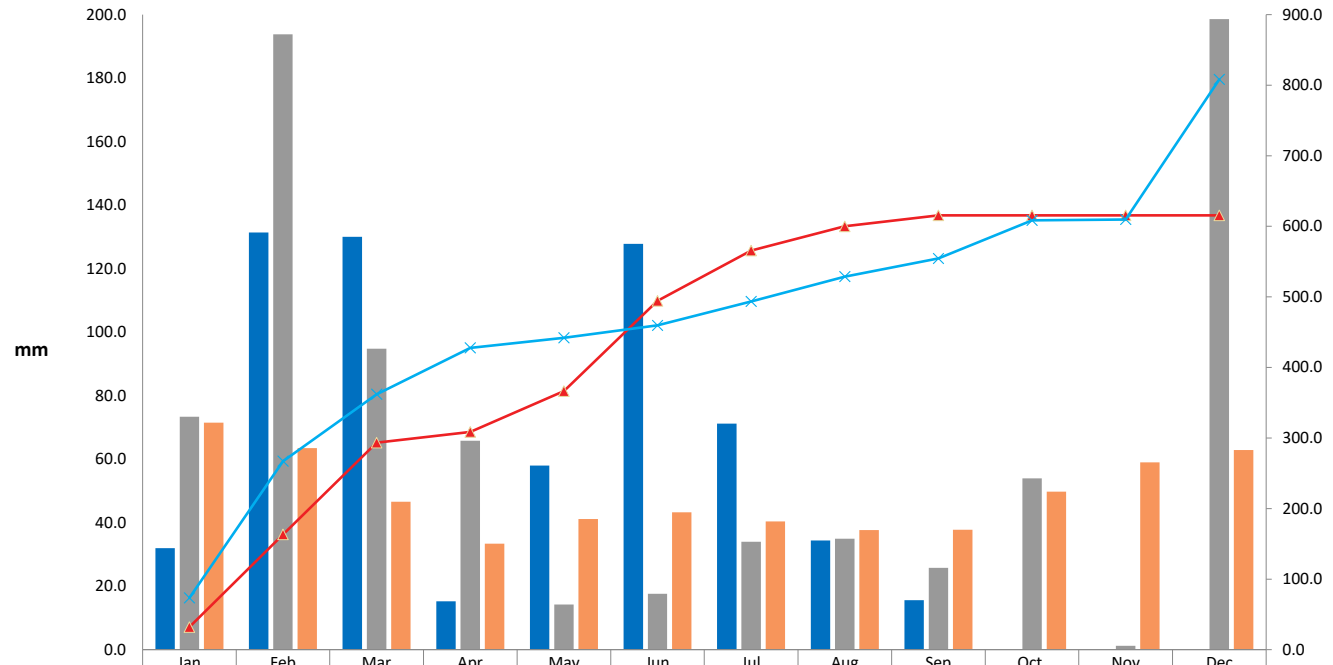
---

Air Quality, Noise and Ground Water monitoring has been undertaken in accordance with Project Approval and EPL requirements.

No exceedances of Project Approval or EPL limits have occurred in the reporting period.

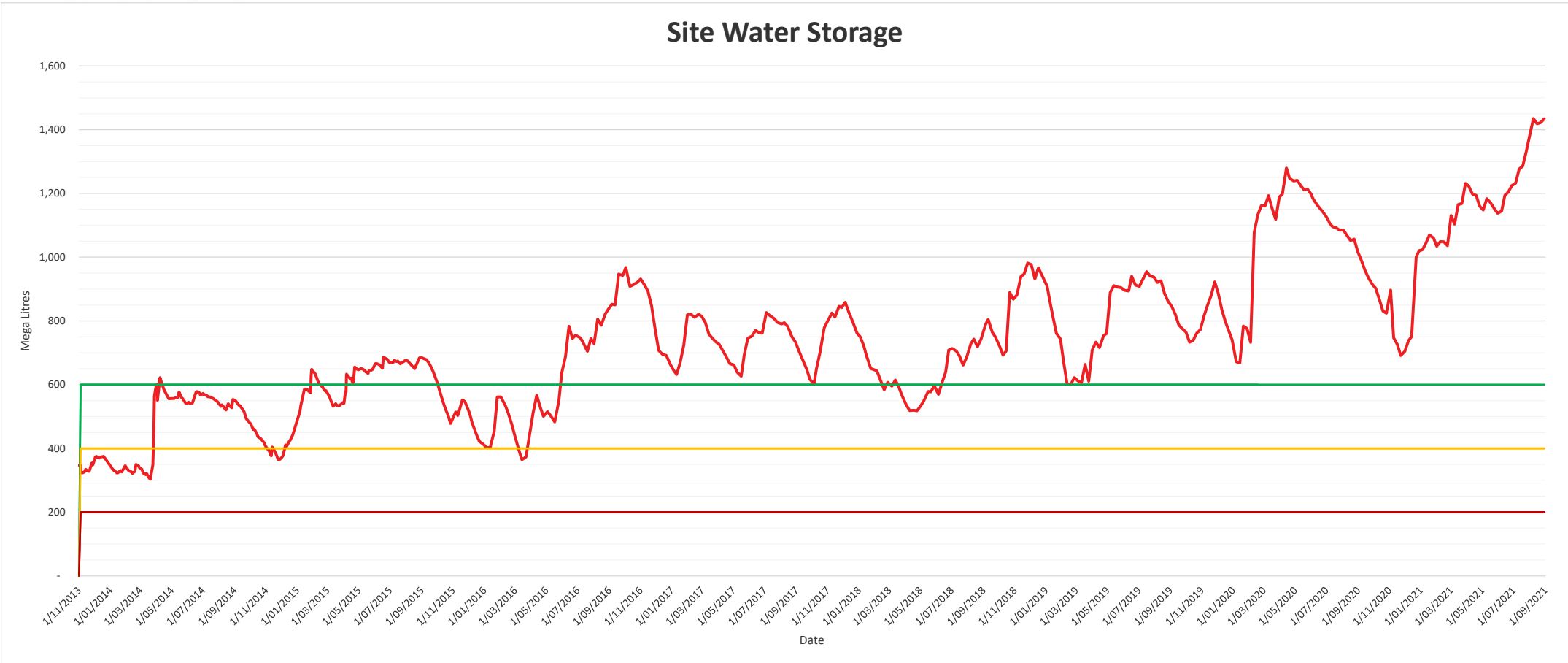


### YTD Rainfall 2021



	Jan	Feb	Mar	Apr	May	Jun	Jul	Aug	Sep	Oct	Nov	Dec
Month to Date	32.0	131.4	130.0	15.2	58.0	127.8	71.2	34.4	15.6			
Historical Site Data 2020	73.4	193.8	94.8	65.8	14.2	17.6	34.0	35.0	25.8	54.0	1.2	198.6
Historical Average (Boggabri Post Office)	71.5	63.5	46.6	33.4	41.2	43.3	40.4	37.7	37.8	49.8	59.0	62.9
Year to Date Cumulative	32.0	163.4	293.4	308.6	366.6	494.4	565.6	600.0	615.6	615.6	615.6	615.6
Historical Site Data 2020 Cumulative	73.4	267.2	362.0	427.8	442.0	459.6	493.6	528.6	554.4	608.4	609.6	808.2

### Site Water Storage





## Bore Extraction Since Previous Meeting

BCO has extracted 82 ML from its borefield since the 13<sup>th</sup> May 2021



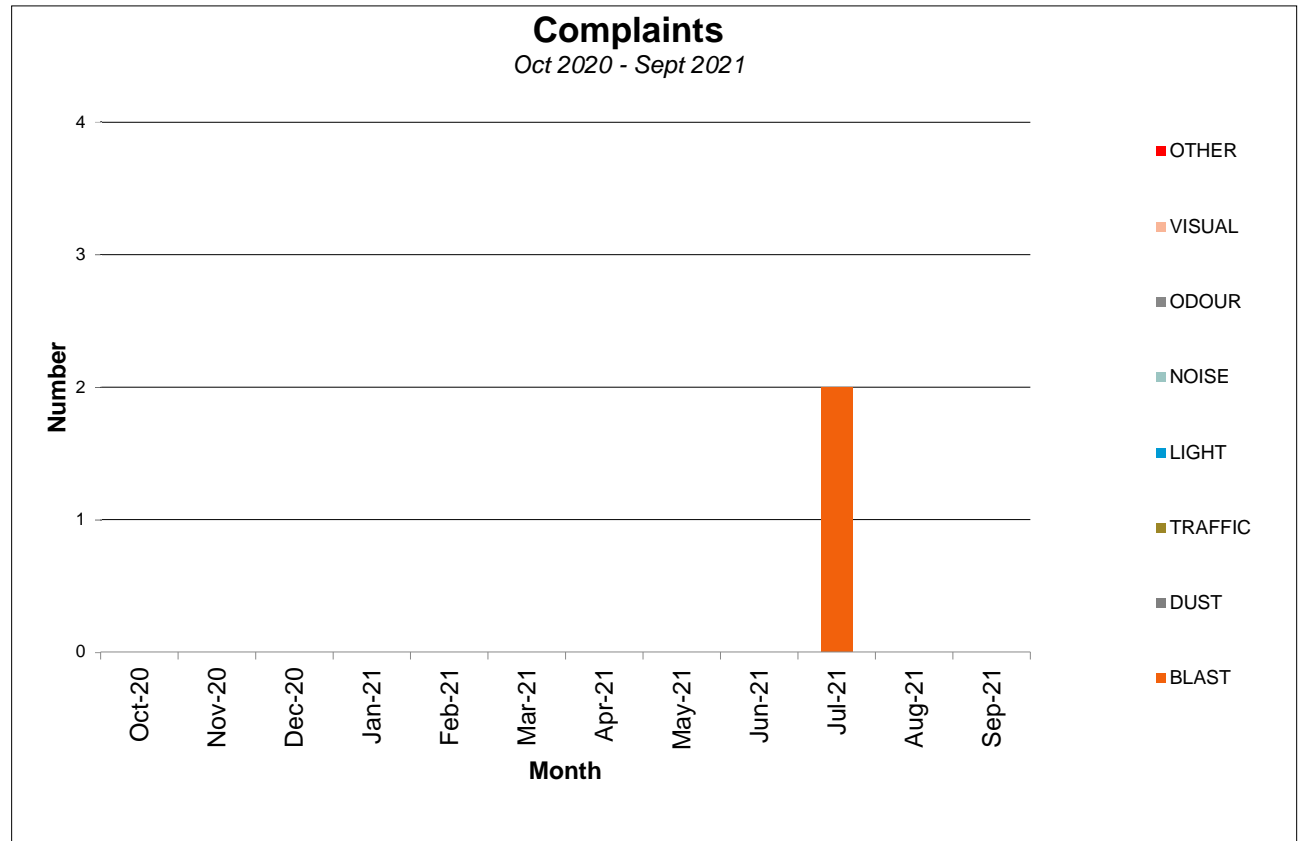




# Community Complaints

Two blast complaints were received in July.

One on the 19<sup>th</sup> of July and one on the 26<sup>th</sup> of July





## General Business





## MOD8 – What’s Next?

### Work program for Q3-Q4 2021:

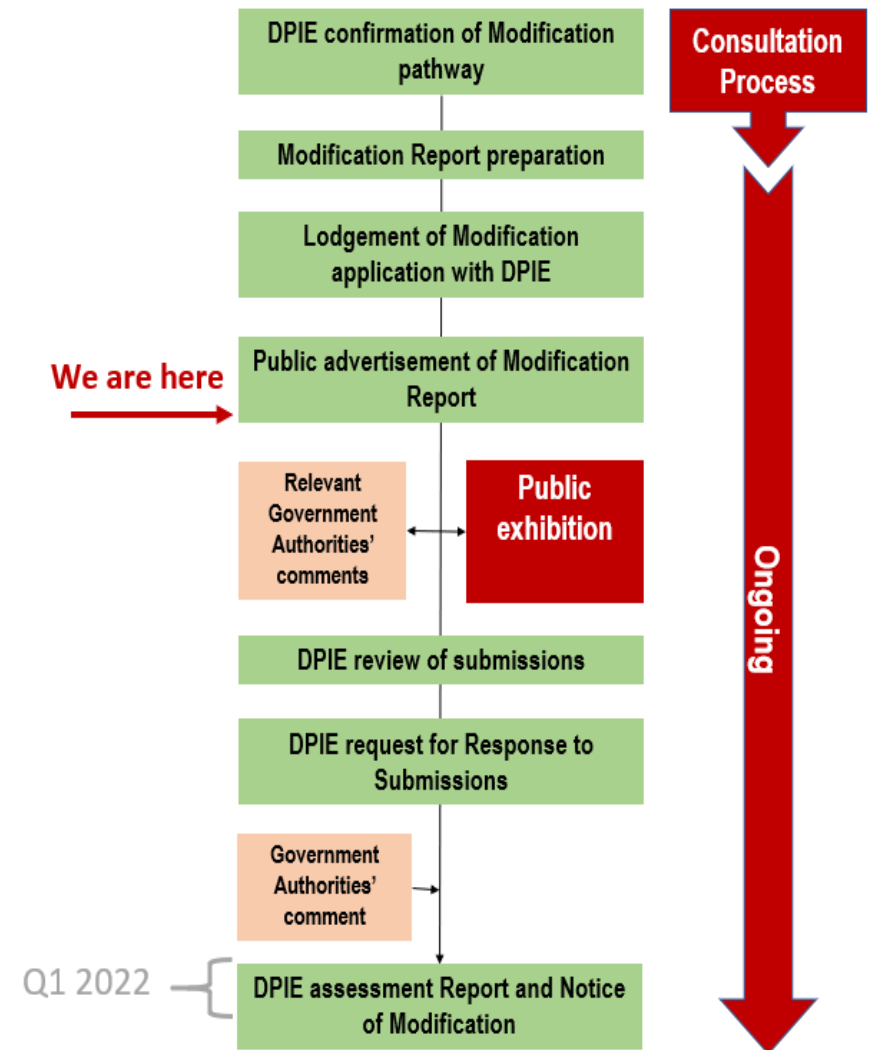
Public Exhibition closes 09/09

Response to submission phase commences.

Stakeholder engagement will continue for life of project.

Updates will be provided on project webpage:

<https://www.idemitsu.com.au/mining/projects/bco-mod8-project/>



## Biodiversity Offset Areas

- CCC Biodiversity Offsets Property site visit to be held in November.
- The Autumn pest program was a combination of 1080 fox baiting and night shooting. The baiting program was very successful with 55.7% of the baits taken were by foxes (296 in total).
- During the night shooting 39 pigs, 4 cats, 3 foxes and 1 hare were removed. Pig trapping has occurred during August with over 50 pigs removed.
- Tree planting has been completed in Merriendi and Braefield and is continuing in Nioka North. Approx. 40,000 of 86,000 tubestock have been planted.
- Eastern Offsets exclusion fenceline.

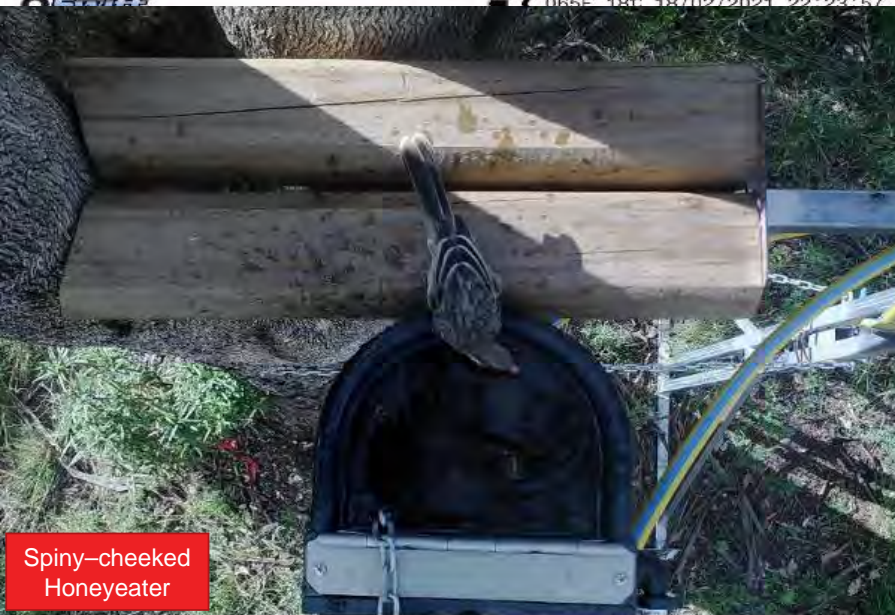
 idemitsu  
Appendix





Brushtail Possum's

085E 18°C 18/02/2021 22:23:57



Spiny-cheeked Honeyeater

083F 28°C 12/03/2021 17:03:10



Eastern Rosella's

081F 27°C 22/02/2021 09:58:38



Lace monitor

093F 33°C 30/01/2021 11:37:28



Sugar Glider

Swift C 031F -00C 13/04/2021 00:43:19



Spotted bowerbird

Swift 064F 17C 09/07/2015 07:58:55



Southern Boobook

Swift 064F 17C 29/12/2020 18:03:27



Sulphur-crested Cockatoo



Blue-faced Honeyeater

Swift 070F 21°C 27/05/2021 17:49:18



Apostlebird's

Swift 093F 33°C 19/12/2020 14:34:37



Feral Goat

Swift 065F 18°C 19/05/2021 13:13:30



Australian King-parrot

Swift 083F 28°C 20/02/2021 19:14:58





Rat

OSwift C 046F 07C 14/04/2021 22:40:55



Grey-crowned Babbler (Vulnerable)

OSwift C 074F 23C 15/04/2021 04:32:10



Grey butcherbird

OSwift C 083F 28C 21/02/2021 18:53:19



Cat


OSwift C 046F 07C 30/07/2015 12:59:31



Swift 078F 25C 24/01/2021 09:12:07

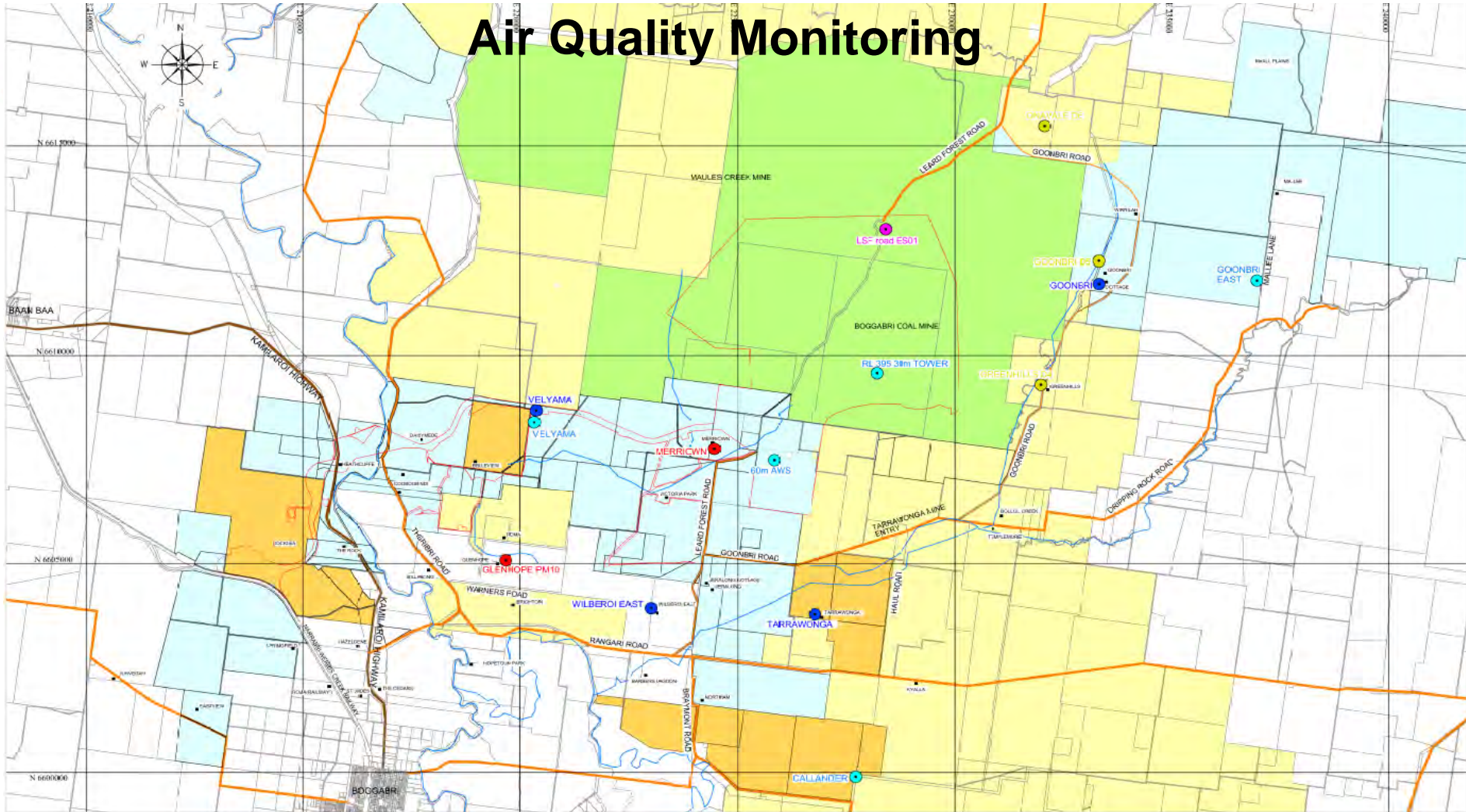


Swift 057F 13C 13/05/2015 04:49:57

 idemitsu  
Next Meeting



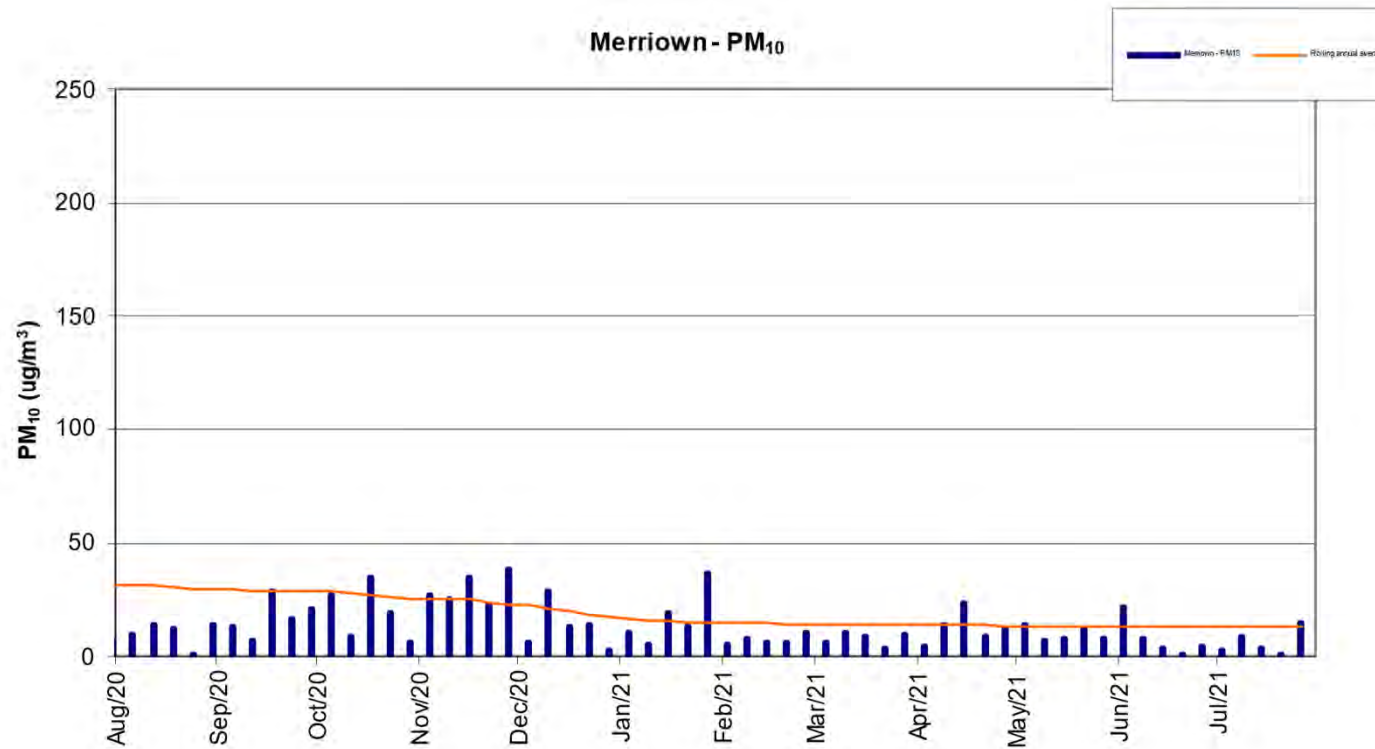
# Air Quality Monitoring



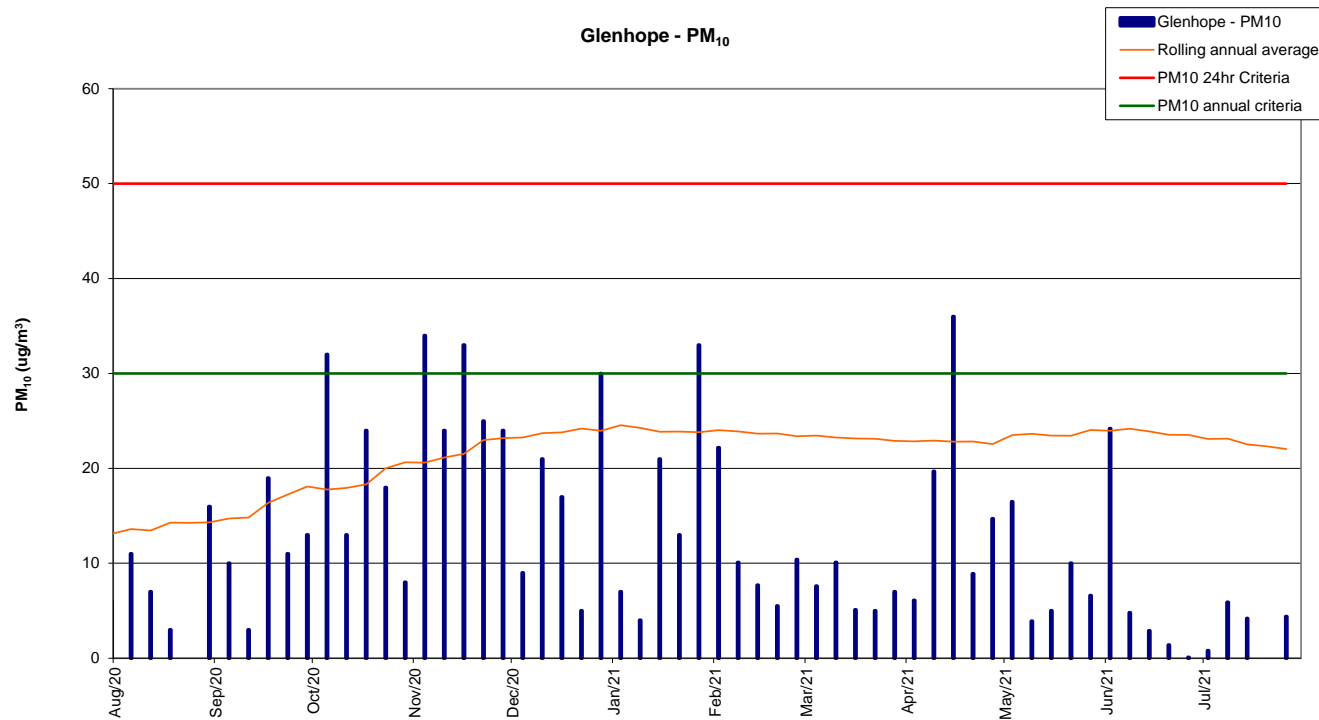
REV	REVISIONS	DATE	General Legend		QUALITY RECORD		SCALE	FILE REF:	Boggabri Coal Operations										
			<ul style="list-style-type: none"> <li>● Meteorological Station</li> <li>● TEOM</li> <li>● E-Sampler</li> <li>● Dust Monitoring</li> <li>● High Volume Air Sampler</li> </ul>	<ul style="list-style-type: none"> <li>■ Residence / Property name</li> <li>— Creek / River</li> <li>— Roads</li> <li>— Kamilaroi Highway</li> </ul>	<table border="1"> <thead> <tr> <th>REVIEW</th> <th>NAME</th> <th>SIGNATURE</th> <th>DATE</th> </tr> </thead> <tbody> <tr> <td>DRAWN</td> <td>MC GARDNER</td> <td></td> <td>11/3/21</td> </tr> <tr> <td>DWG CHECKED BY</td> <td></td> <td></td> <td></td> </tr> </tbody> </table>	REVIEW	NAME	SIGNATURE		DATE	DRAWN	MC GARDNER		11/3/21	DWG CHECKED BY				<ul style="list-style-type: none"> <li>Property Ownership</li> <li>Boggabri Coal</li> <li>Boggabri Coal &amp; Whitsavien Coal Mining</li> <li>Whitsavien Coal</li> <li>State Forest</li> <li>Boggabri Coal Project Approval Boundary</li> </ul>
REVIEW	NAME	SIGNATURE	DATE																
DRAWN	MC GARDNER		11/3/21																
DWG CHECKED BY																			
Completion of the Quality Record is evidence that drafting has been verified according with the requirements of the Quality Plan. Where the Quality Record is incomplete all information on this drawing is intended for preliminary purposes only and is uncontracted.								DRAWING NO: 216821b											
								ORG. FILE SIZE: A3											
								REV											



# Air Quality Monitoring



# Air Quality Monitoring





# Air Quality Monitoring

